

We recommend the use of this structure with the MPrime modules, certified by:



THE COMPANY

Specialized in the distribution of PV modules, kits and components, MPrime focuses on flexibility, excellence in service and continuous technological innovation, in order to provide our clients all over the world with the best portfolio, service and warranties. Part of Martifer Solar, MPrime benefits from a wide international experience in solar photovoltaic installations.

SMARTROOFING FRAME

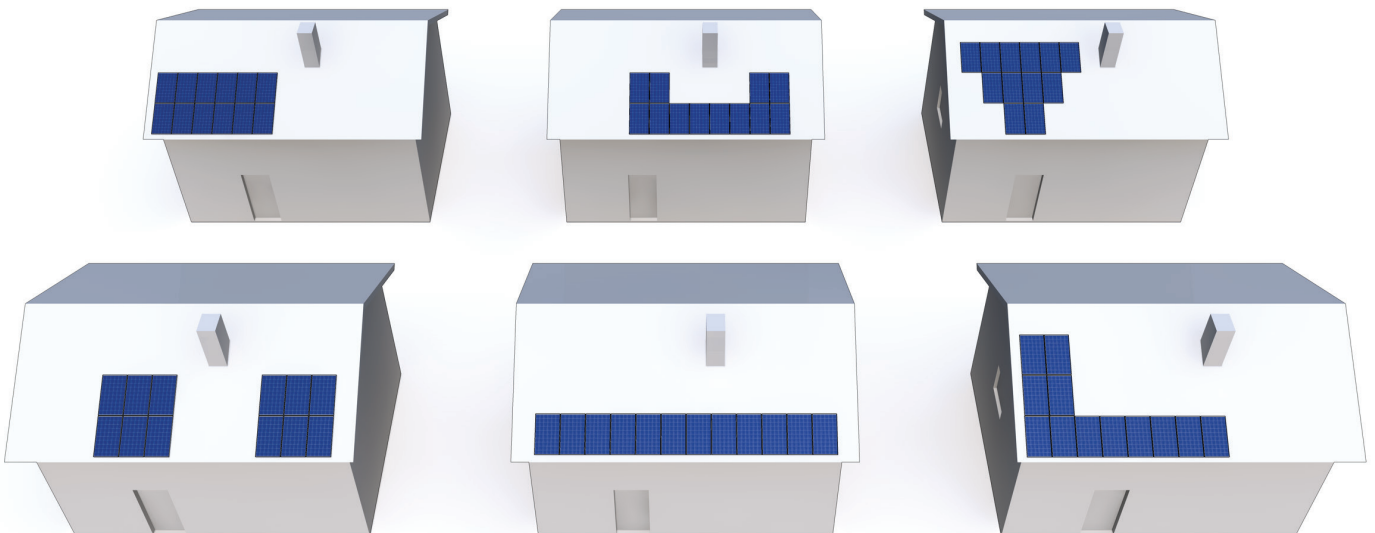
The MPrime roof frame is a BIPV product developed to ensure a full integration of PV panels in rooftops. Thanks to its modular design, it can be adapted to small, medium and large PV systems in all types of applications: industry, agriculture and private households. The combination of the parts allows an easy and fast assembly of the PV modules ensuring a perfect tightness.

MPRIME SMARTROOFING FRAME ADVANTAGES

- Optimized production and high efficiency
- Perfect integration that warrants a perfect impermeability and good aesthetics
- A tailor-made solution: Compatible with most common rooftop coverings and all types of tiles and slates, its dimensions allow various combinations adapted to the possible obstacles on the roof like chimneys, etc
- An easy mounting thanks to pre-assembled components
- A cost and time saving installation: the modular concept allows a simple construction similar to a Lego® mounting system
- A lightweight structure easy to transport and manipulate

AVAILABLE CONFIGURATION

Multiple configuration layouts are possible. Contact us to learn more about the most suitable option for your roof.



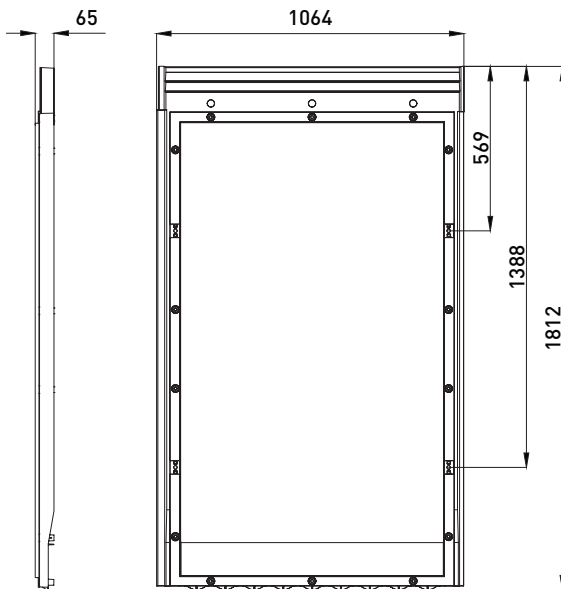
MECHANICAL SPECIFICATIONS

- External dimension: 1,812 x 1,064 x 65 mm
- Weight: 4.8 kg
- Material: Menzolit® SMC 0200
- Fire resistance class B2 according to DIN 4102
- UV resistant
- High resistance to corrosion, salinity and ice

WARRANTY & CERTIFICATION

Product warranty: 10 years
CSTB Certification (in process)

DIMENSIONS (All figures are in mm.)



A COMPLETE KIT READY TO INSTALL

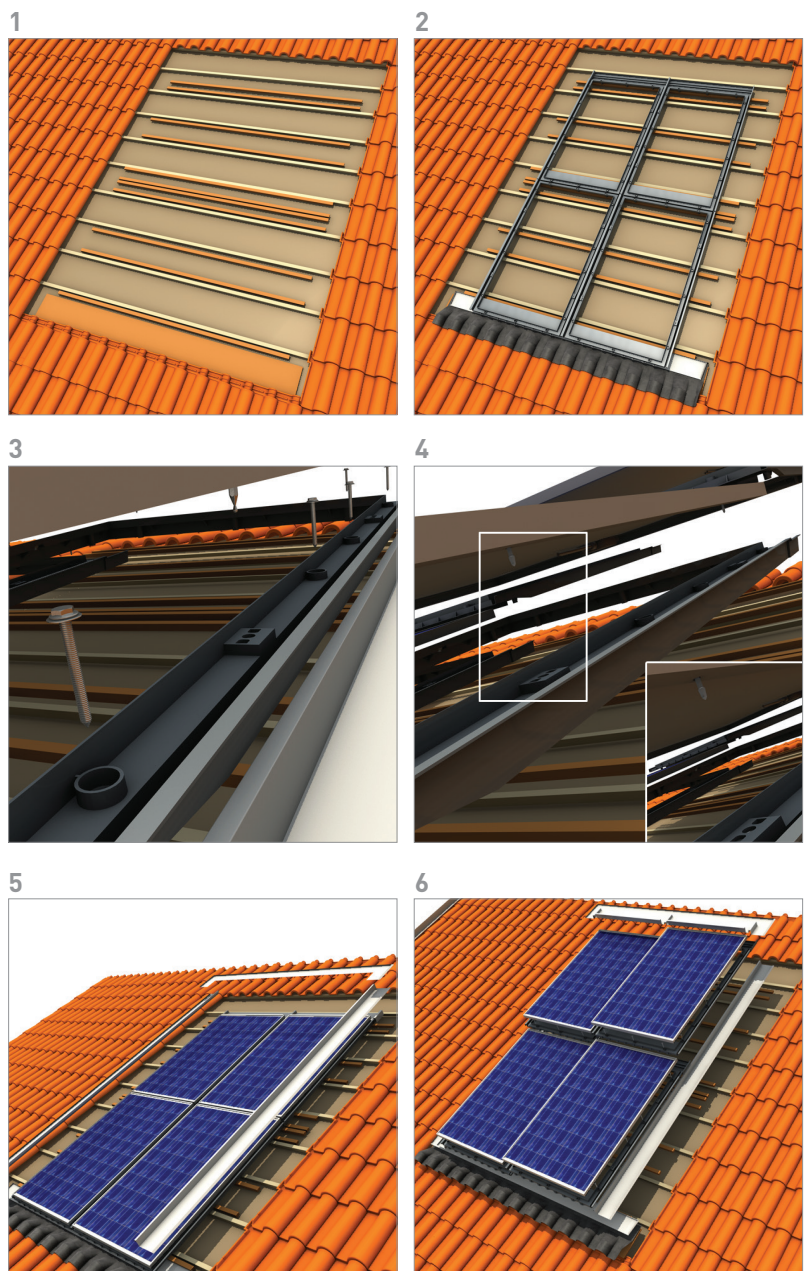
This integrated roof structure can be incorporated in a complete kit ready to use with all the components necessary for an easy roof installation:

- Frame and module
- Inverter
- Electrical board
- All components and connectors
- Instruction manual

CHARACTERISTICS

- Compatible with all MPrime PV module range (215 W – 240 W)
- Suitable for roofs with slope ranges from 15 to 60 degrees
- Resistant to winds of up to 150 km/h, when installed at a maximum altitude of 500 m and height from ground up to 15 m
- Temperature range: -40°C to + 100°C

INSTALLATION



CAUTION: read safety and installation instructions before using the product. (available in WWW.MPRIMESOLAR.COM).

DISCLAIMER: specifications included in this datasheet are subject to change without notice from the company. In case of any conflicts/problems that may arise due to misinterpretation, prevailing conditions are the ones described in the original version (in English).

